

Lot 231
Cantina Road
Angle Vale

W Weeks

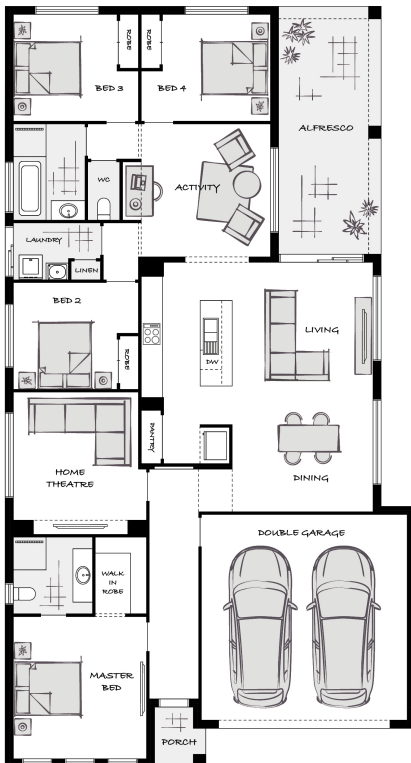


House
& Land

\$627,798*

4 3 2 2

Land size: 531.00m² | Home size: 224.64m²



The pricing includes our Signature Home Finish Package Promotion complete with:

- 2700 high ceilings
- 2400mm high entry door
- 2400mm high panel lift garage door
- Ducted reverse cycle air-conditioner
- Supply and install of carpet to bedrooms & WIR
- Supply and install of timber laminate flooring to remainder

At Weeks Homes our Standard Inclusions go above and beyond. The pricing also includes:

- Supaloc steel frames
- Base footing allowance
- Kitchen, bathroom & laundry Joinery
- Fisher & Paykel stainless steel appliances
- R2.0 Insulation to external walls
- R5.0 Insulation to ceilings (including garage)
- Colorbond roof, gutters, & fascias
- 25 degree roof pitch
- Instantaneous gas hot water service
- Panel-lift garage door with remote control
- Iconic light switches
- 450mm x 450mm tiles to wet areas
- Built-in robes
- Stormwater allowance
- Temporary fencing during the build
- Full working drawings
- Full council approval
- Energy efficiency report
- Engineers full construction report
- Homeowners warranty insurance

Enquiries: **Matthew Watts**

0437 448 539

matthew.watts@weeks.com.au

weeks.com.au

Terms & Conditions: Conditions apply to all packages: Individual legal contracts apply for both the home and the land (land contract to be issued by the Vendor) and is subject to availability. The land referred to in this package is not owned by Weeks Homes, we make no representation about the suitability to build on or other. All plans are copyright and no part may be reproduced or copied without prior consent from Weeks Homes ACN 008 087 278. For full details regarding the terms and conditions associated with this house and land package refer to weeks.com.au/terms-and-conditions